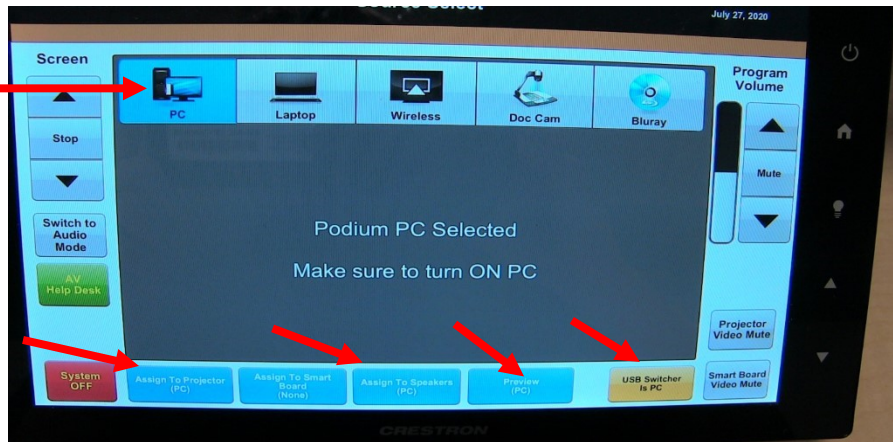


Classroom Instructions for PC Users

If you are using the PC all inputs should be set to PC on Crestron

Step 1: Select PC as your input source



Step 2: Select where to send. First option is to classroom projector

Step 3. Make sure Yellow button is selected for PC

If Using PC What Your Zoom Audio Settings Should Be Set To

Step 4: Select Echo Canceling Microphone

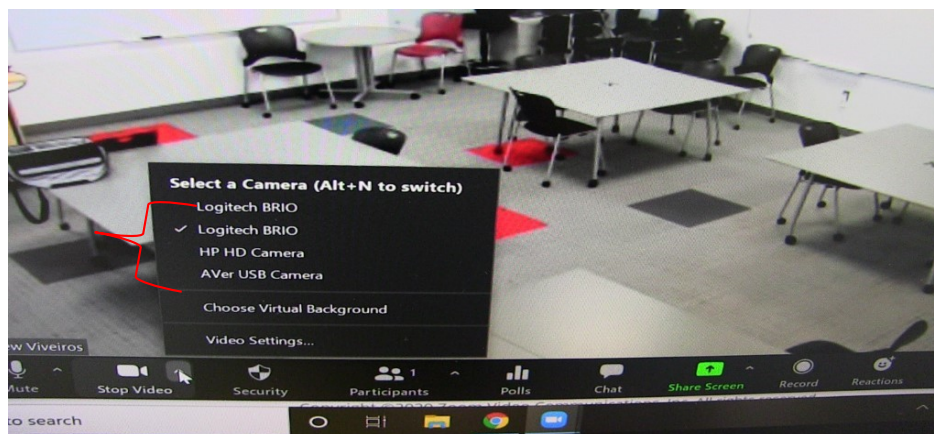
Step 5: Select Crestron Speaker



If Using PC What Your Zoom Video Settings Can Be Set To

Step 6: Select your camera source

1st Logitech = Podium Cam
2nd Logitech = Classroom Cam
AVER USB = Doc Cam



1st Logitech Brio = Podium Cam

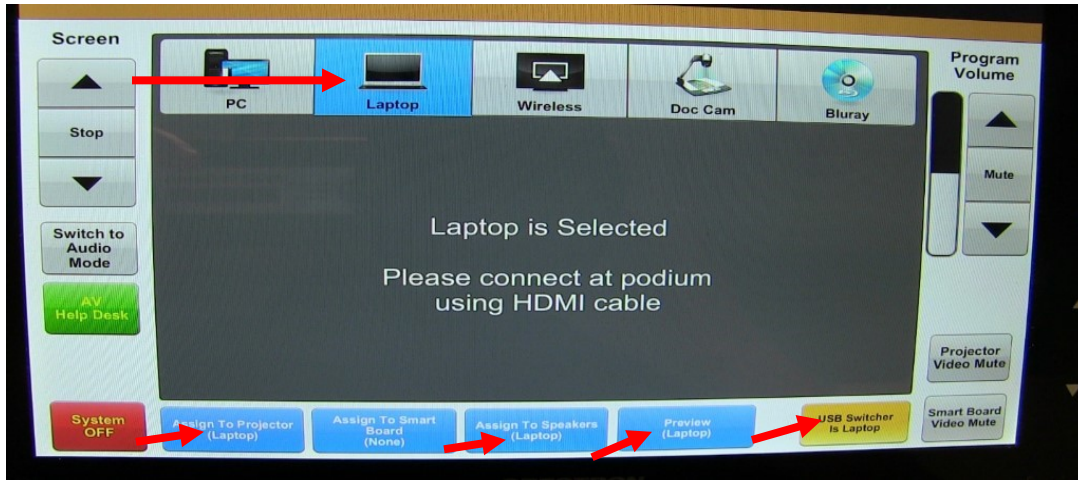
2nd Logitech Brio = Classroom Cam

Aver USB Cam = Doc Cam

Classroom Instructions for Laptop Users

If you are using a Laptop all inputs should be set to Laptop on Crestron

Step 1: Select Laptop as your input source



Step 2: Select where to send. First option is to classroom projector

Step 3. Make sure Yellow button is selected for Laptop

If Using Laptop What Your Zoom Audio Settings Should Be Set To

Step 4: Select Echo Cancelling Microphone

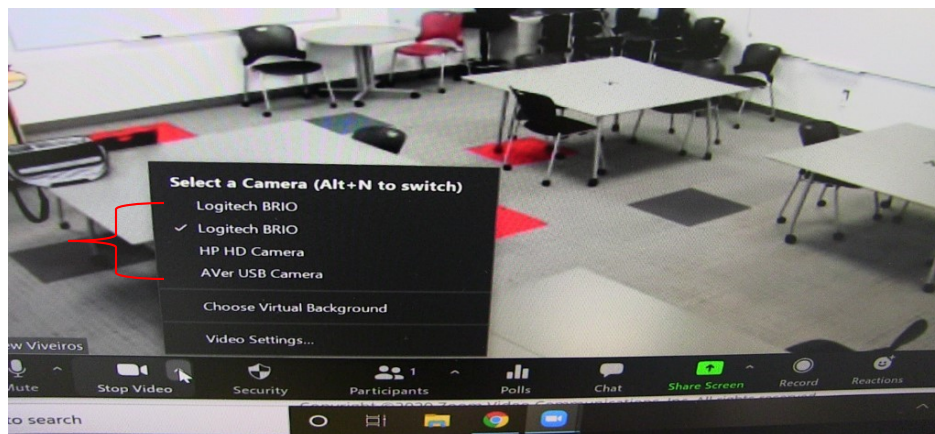


Step 5: Select Crestron Speaker

If Using Laptop What Your Zoom Video Settings Can Be Set To

Step 6: Select your camera source
1st Logitech = Podium Cam
2nd Logitech = Classroom Cam

AVER USB = Doc Cam
HP HD Cam = Laptop camera



1st Logitech Brio = Podium Cam

2nd Logitech Brio = Classroom Cam

Aver USB Cam = Doc Cam

HP HD Camera = Laptop Build in Webcam